

The ALTA Institute CCC-NLIP PublicHealthMT

Research Staff Forum, 6 November 2020
Andrew Caines, NLIP Group



My background

- ❑ Linguistics PhD, 2006 to 2009~10
- ❑ True Knowledge (-> Evi -> Alexa), late 2009
- ❑ European Bioinformatics Institute, 2010-2013
- ❑ ALTA Institute since Oct 2013
- ❑ Computer Lab transfer Oct 2018
- ❑ RSF since summer 2019

ALTA Institute

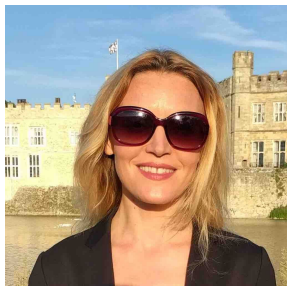
- ❑ Automated Language Teaching & Assessment
- ❑ Director: Prof Paula Buttery
- ❑ PIs: Paula, Profs Ted Briscoe, Andy Rice (CL), Mark Gales (CUED)
- ❑ Funding: Cambridge Assessment
- ❑ CL & CUED groups (+ Linguistics)
- ❑ AI for Education, Education Technology, Machine Learning, Natural Language Processing, Speech Processing

ALTA Institute

- ❑ At CL:
- ❑ RA / R.Assis: me, Øistein Andersen, Chris Bryant, Mariano Felice, Ekaterina Kochmar, David Strohmaier, Shiva Taslimipoor, Zheng Yuan
- ❑ PhD: Chris Davis, Mark Elliott, Youmna Farag, Sian Gooding, Russell Moore*, Gladys Tyen, Ahmed Zaidi*

ALTA @ CL

Top: Paula, Andy, Ted



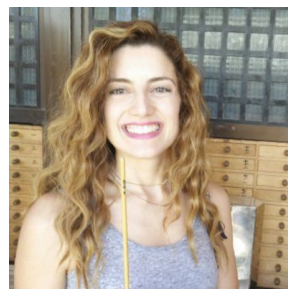
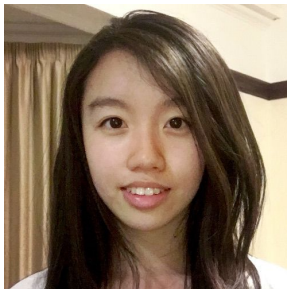
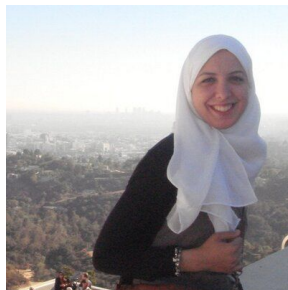
Middle: Theresa, Øistein,
me, Ekaterina



Bottom: Chris, Mariano,
Shawn, David, Shiva,
Zheng



ALTA @ CL



Top: Chris, Mark, Youmna, Sian, Russell
Bottom: Gladys, Ahmed, Marek, Helen

ALTA Institute

- ❑ Our research strengths:
- ❑ Auto-marking written & spoken English exams
- ❑ Grammatical error detection & correction
- ❑ Complex word identification & text simplification
- ❑ Adaptivity (personalisation)

ALTA Institute

- ❑ New directions:
- ❑ Task creation & calibration
(appropriate text generation at specific difficulty levels, good prompts of language display)
- ❑ Interpretable & actionable feedback
- ❑ Dialogue systems (chatbots) for language learning
- ❑ And more...

ALTA Institute

- ❑ Recent publications:
- ❑ Auto-marking speech with written transcriptions only
- ❑ Adaptive forgetting curves for spaced repetition of vocabulary flashcards
- ❑ Replication shared task: multilingual essay proficiency scoring
- ❑ Crowdsourced speech corpus
- ❑ Teacher-student chat corpus

ALTA Institute

- ☐ More about ALTA:
<http://www.wiki.cl.cam.ac.uk/rowiki/NaturalLanguage/ALTA>

CCC-NLIP

- ❑ Cambridge Cybercrime Centre X Natural Language & Information Processing
- ❑ Connection made thanks to Prof Alastair Beresford, summer 2017
- ❑ Alan Turing Institute grant: data science for cybersecurity
- ❑ Prof Paula Buttery, Drs Alice Hutchings & Sergio Pastrana

CCC-NLIP

- ❑ NLP approaches to **CrimeBB** analyses:
- ❑ Classifying function & intent of posts ('offer X', 'request X', comment, tutorial, vouch, etc)
- ❑ Characterising key actors ('characterizing Eve')
- ❑ Detecting aggressive language (quite friendly! more so than Wikipedia page edit comments)

CCC-NLIP

- ❑ Further funding from Alan Turing Institute:
- ❑ Apply NLP classifiers to all of HackForums
- ❑ New key actors (supply chain actors)
- ❑ Group-based trajectory modelling (+ Dr Ben Collier)

CCC-NLIP

- ❑ Continued co-supervision of projects...
- ❑ New EPSRC grant to Dr Alice Hutchings:
- ❑ CybercrimeNLP (CC-NLP): A natural language processing toolkit for the interdisciplinary analysis of underground online forums
- ❑ Profs Ross Anderson & Paula Buttery, Dr Ildiko Pete, Jack Hughes
- ❑ October 2020 -- April 2022

PublicHealthMT

- ❑ Global Challenges Research Fund:
- ❑ Machine translation of public health documents for low-resource languages
- ❑ Focus on African languages
- ❑ Low linguistics resources = challenging machine translation
- ❑ Attempting equitable dissemination of information for the *next* pandemic



Maladie à coronavirus 2019 (COVID-19): conseils au grand public

← Nouveau coronavirus (2019-nCoV)

Nouveau coronavirus
(2019-nCoV): conseils
au grand public ▾

Actualités ▾

Lignes directrices
pour le nouveau ▾

Cette page est régulièrement mis à jour au fur et à mesure de l'évolution de l'épidémie et des nouvelles conclusions scientifiques. **Dernière mise à jour en date du 7 octobre 2020.**

En bonne santé
à la maison

Quand et
comment
utiliser un
masque

Soins à
domicile pour
les aidants

Violence à
l'égard des
femmes

Petits
rassemblements
publics

Les écoles et la
COVID-19

En finir avec les
idées reçues

Toutes les
questions-
réponses

PublicHealthMT

- ❑ Global Challenges Research Fund:
- ❑ Was due to begin 1st October
- ❑ Delayed due to COVID-19 delay in confirming GCRF funding
- ❑ £80K → 3 day R.Assis, 1 day for me
- ❑ 9 months, pump priming
- ❑ Apply for follow-on funding
- ❑ (as P.I.)
- ❑ 🙌

Thank you!

- ❏ Questions welcome
- ❏ apc38
- ❏ <https://www.cl.cam.ac.uk/~apc38>